

## MSW Series Low Cost Matrix Switchers with up to 32 inputs from Cameras and up to 8 Independent Controlled Outputs to Monitors.

The series is designed for use in economical multi-user small and medium sized CCTV systems. The family of MSW provide wide selection of peripheral components, including four types of keyboards, telemetric control unit for 11 functions, external relays unit, external alarm interface unit and a control unit for VCR (On/Rec./Off).

### FEATURES

- To choose any of 32 cameras on any of 8 monitors by its individual remote control keyboard and to control it.
- To choose any of 16 audio/video cameras on any of 4 monitors by its individual remote control keyboard and to control it.
- To choose any of 32 cameras on any of 8 monitors and to control it from a universal remote keyboard.
- To control the executing devices (electric door lock, automatic gates, light e.t.c.) from any remote keyboard in the visible area of any chosen camera.
- To connect up to 16 remote keypads and totally up to 99 P/T/Z and relay boxes.
- To control a common VCR (on/record/stop) from any remote keyboard manually or automatically during the function of an alarm detector.
- To get a cyclic automatic tour of all cameras (from 1 to 32) on any of monitors with 3 second steps.
- To program the sequence tours and duration of automatic switches of each cameras with 3 second steps (totally 90 steps) on any of monitors from its remote keyboard.

### COMPONENTS

**MSW1608** – Microprocessor-based modular matrix switcher for 4 video inputs and 4 video outputs expandable to up to 16 video inputs and up to 8 video outputs.

*Control* – 3 wire Com-port for P/T/Z and Keyboards.

*Case* - 19" rack-mount ears available for 13 expansion modules.

**MSW3208** – Microprocessor-based modular matrix switcher for 4 video inputs and 4 video outputs expandable to up to 32 video inputs and up to 8 video outputs (or up to 16 audio/video inputs and up to 4 audio/video outputs).

*Control* – 3 wire Com-port for P/T/Z and Keyboards.

*Case* - 19" rack-mount ears available for 13 expansion modules.

**IMSW 4** – Input expansion module for 4 video (or audio) inputs.

**OMSW 4** – Output expansion module for 4 controlled video (or audio) or distributive outputs.

**KP-IR** – Remote control unit for MSW switcher and P/T/Z with IR remote keypad.

**KP-RF** – Remote control unit for MSW switcher and P/T/Z with RF remote keypad.

**VKP** – Vandal proof desk control keyboard for switcher MSW.

**VKP/F** - Vandal proof desk control keyboard for switcher MSW and P/T/Z.

**ERB2** – External relays box.

**TCU11** – Telemetric control unit with 11 functions.

**AC4** – External 4 inputs alarm interface unit.

**VCR-UC** – Common videotape recorder control unit (ON, REC, STOP).

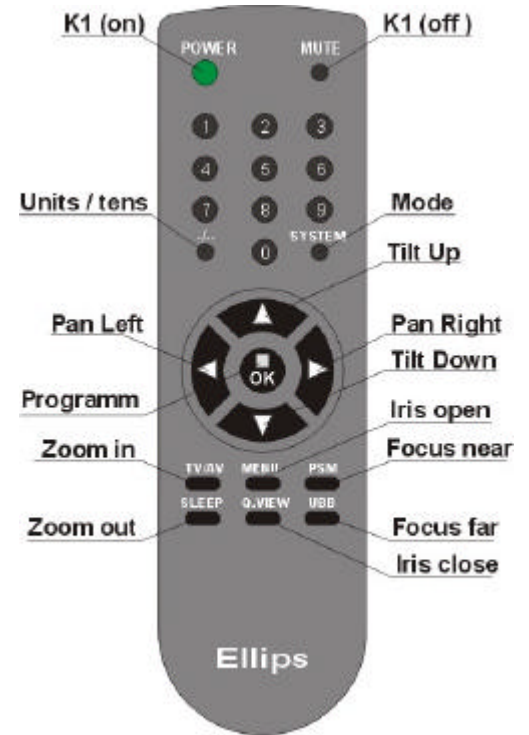
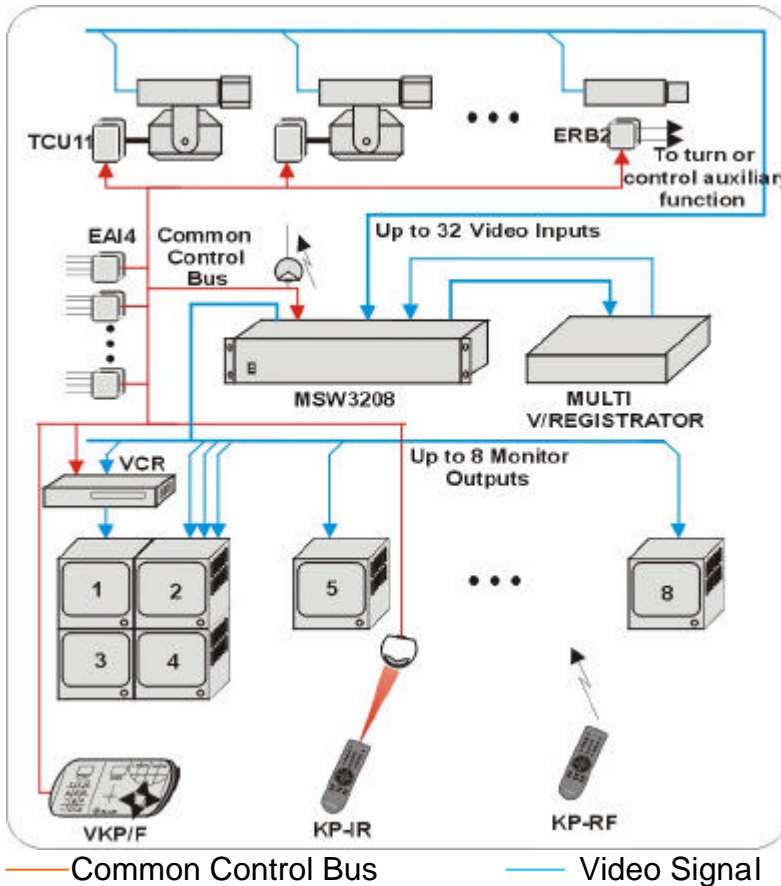
### Technical Specifications

Total Quantity of Slots	13
<i>Maximum Possibility of Connections of</i>	
Input Modules in MSW1608	4
Input Modules in MSW3208	8
Output Modules	2
Distribution Modules	8
Remote Keyboards	16
Telemetric Control Units and Relay Boxes	64
External Alarm Interfaces	32
Communication Com. Bus Current Loop	20Ma
Video Inputs	1V p-p
Impedance	75 ohm
Video Bandwidth	6MHz (-3dB)
Cross-talk Between Adjacent	

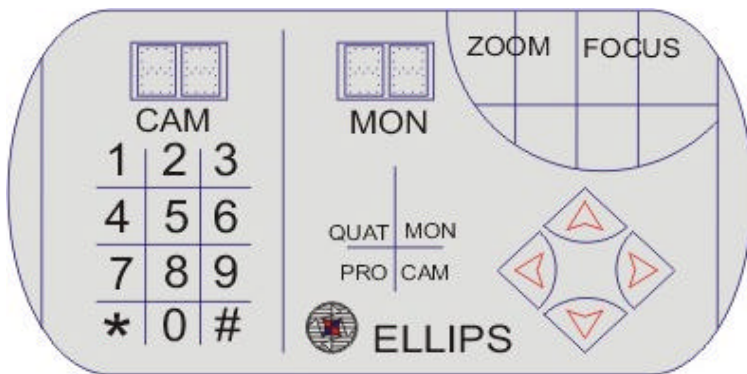
Video Inputs	Less than	-48dB
Sequence		90steps by 3sec.
<i>Connections</i>		
Video		BNC connectors
Control Bus		RJ11 connector
Operating Temperature		0 to 50C
Input Voltage		230VAC,50Hz (120VAC,60Hz required)
Power Consumption		
maximum (fully populated)		12 watts
<i>Dimensions cm</i>		
Dept		14.5
Width		48.3
Height		8.5
Mounting		19" assemblage stand EIA (3Rus)

## Application Diagram

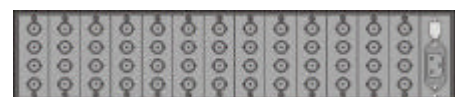
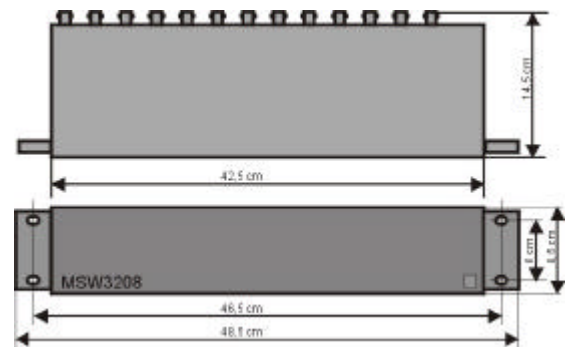
MSW3208 has up to 32 Video Inputs and up to 8 Video Outputs.



**KP-IR/KP-RF**



**VKP/F**



**Rear View**